

Box Top



Beginner

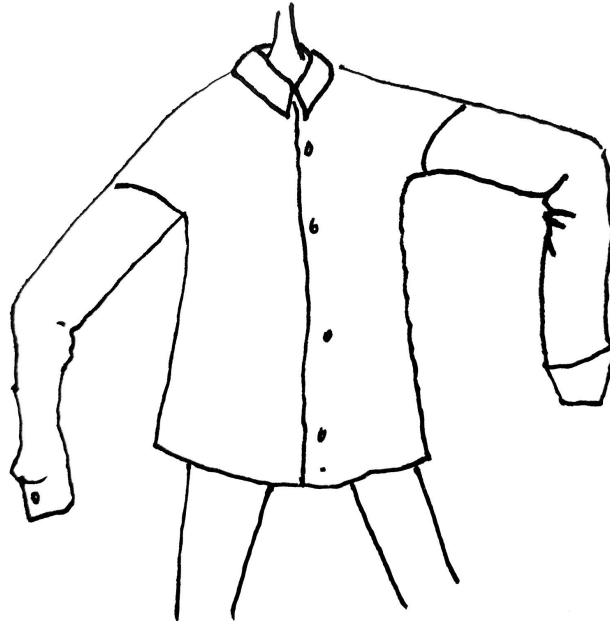
You will need:



1. A thrifted men's shirt that's too big
2. Thread in a matching color (or any color you like)
3. Pointy needle
4. Pointy scissors
5. Pointy pins
6. Iron OR hair straightener
7. BONUS: if you dislike the buttons on the shirt you can replace them with new ones roughly the same size
8. BONUS BONUS: seam glue

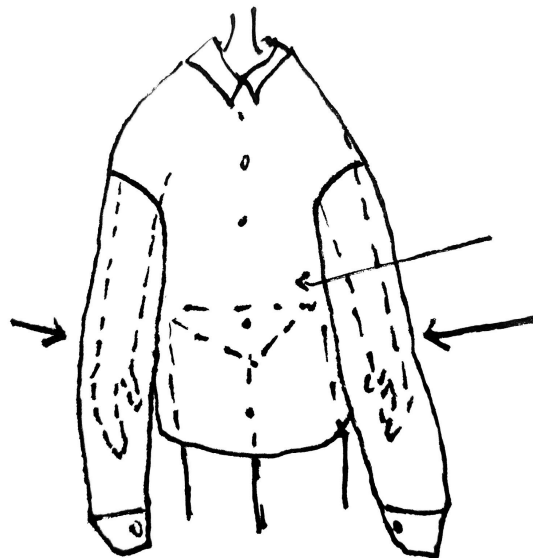
Instructions:

1. Try on your shirt to make sure it's too big. You should like the width of the shirt, as that will not be altered. You'll want to find a shirt that's a little wider than you to create the boxy silhouette

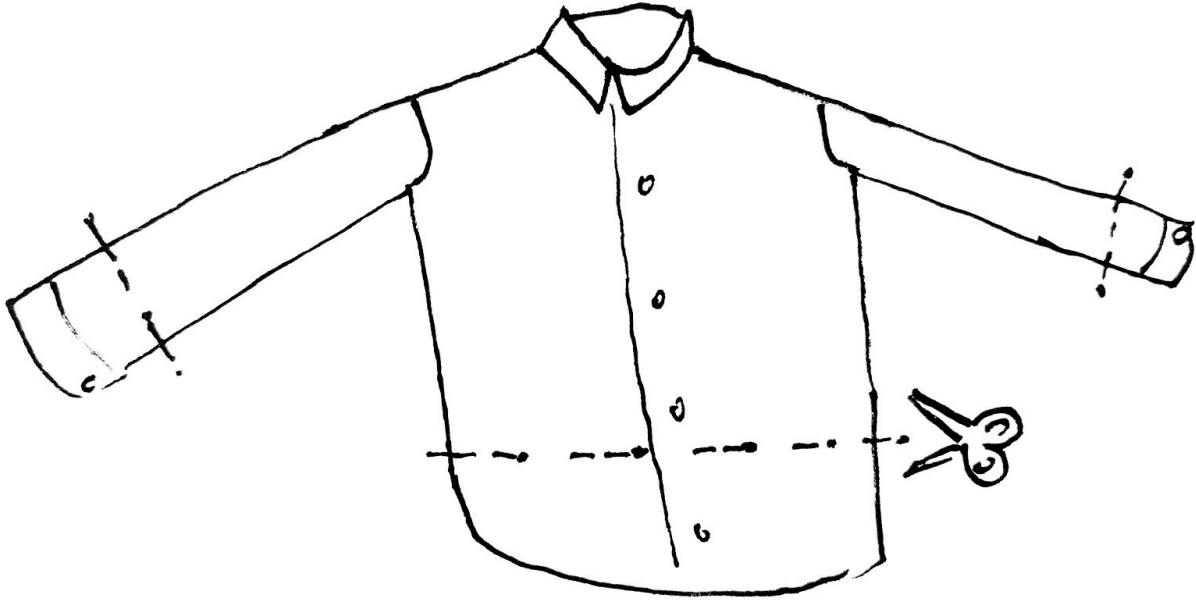


Yep, too big.

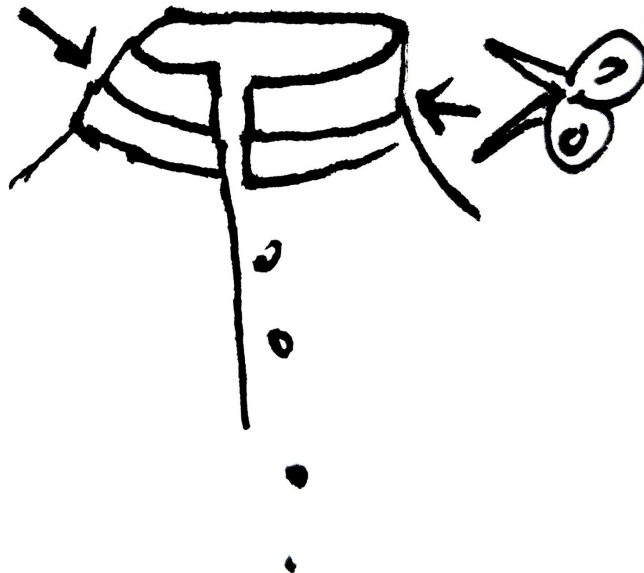
2. Using your pointy pins, mark on the shirt slightly above the wrists for a bracelet sleeve. Do this by wearing the shirt with one arm hanging down at a time. You should also mark slightly above your natural waist. This will be the new length of the shirt.



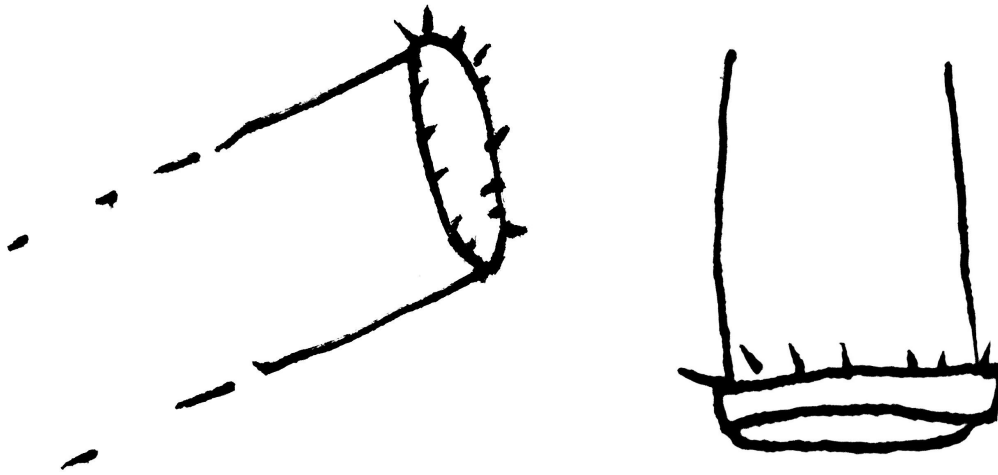
3. Lay the shirt flat on your work surface and make a straight line using chalk, pen, pencil, or any marking device across the sleeves (make sure they are the same length). Do the same with the new waist hemline. Cut straight across using the pointy scissors.



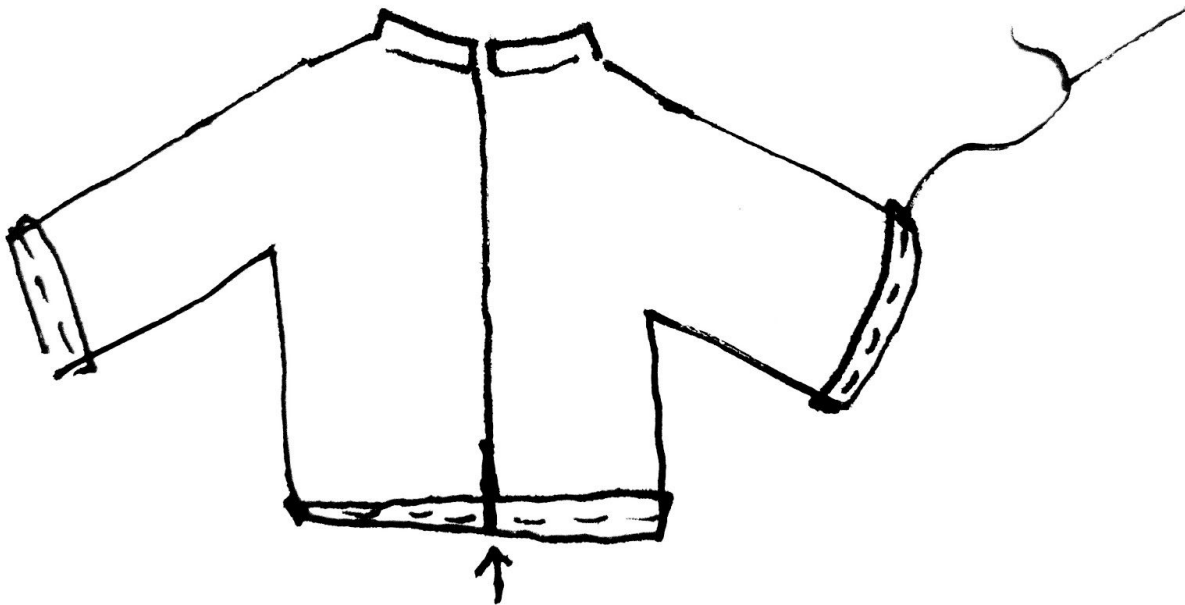
4. Flip up the collar and cut along the seam. You will be left with a nub of a collar.



5. Turn the shirt inside-out and fold over about $\frac{1}{4}$ inch for the seam around the the sleeves and the bottom hemline. Using the iron OR hair straightener, iron the seam down. You may also fold over the seam again to secure the raw edges.



6. Thread the needle and sew the new hems using running stitch.



7. BONUS: If wanted to replace the buttons carefully snip off the old buttons and sew the new ones in their place.

8. BONUS BONUS: If you really want to secure your edges you can use seam glue. If not, you'll just have to give your hems a little haircut every once in a while. Or not and let the strings fly.

9. You're done! This top looks best with high-waisted skinny jeans, or culottes, or whatever you are comfortable in.